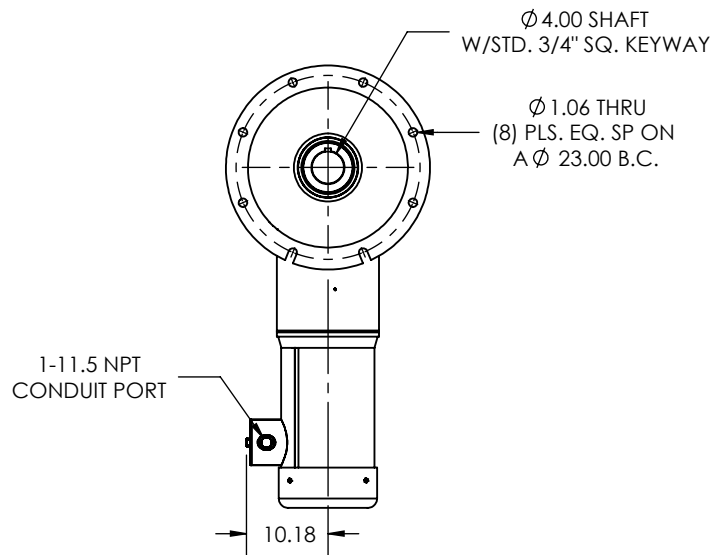
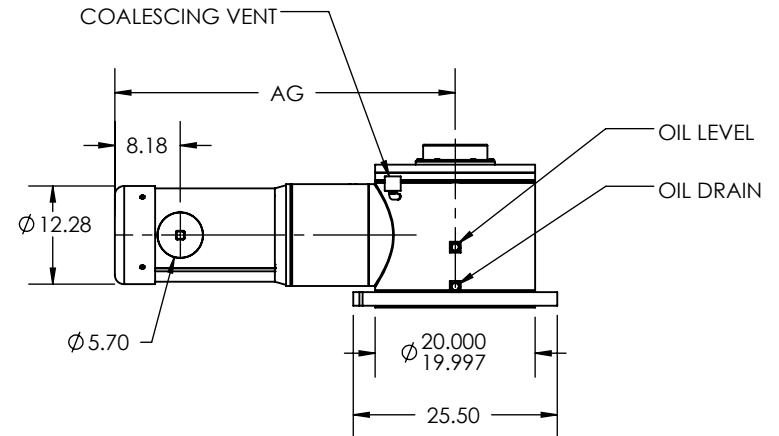
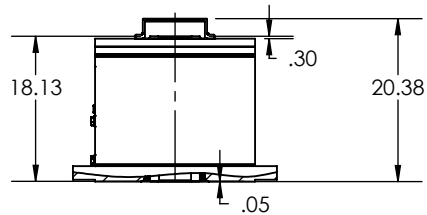


REVISIONS			
REV.	DESCRIPTION	BY	DATE



AG DIMENSION								
OUTPUT RPM RANGE	5 HP	7.5 HP	10 HP	15 HP	20 HP	25 HP	30 HP	40 HP
71-200	---	---	---	---	---	---	---	44.14
51-70	---	---	---	---	---	---	---	47.46
36-50	---	---	---	---	---	44.71	45.71	---
27-35	---	---	---	---	43.76	---	---	---
17-26	---	---	---	42.26	---	---	---	---
12-16	---	38.56	38.68	---	---	---	---	---
10-11	---			---	---	---	---	---
9-10	35.96	---	---	---	---	---	---	---

1. OTHER SHAFT SIZES AVAILABLE
2. OTHER RATIOS AVAILABLE UPON REQUEST

THIS DRAWING CONTAINS INFORMATION WHICH IS PROPRIETARY AND CONFIDENTIAL TO STAINLESS MOTORS, INC., AND IS TRANSMITTED IN CONFIDENCE. THE REPRODUCTION, USE OR DISCLOSURE, IN WHOLE OR IN PART, OF THE DESIGN CONTAINED HEREIN TO OTHERS IS PROHIBITED WITHOUT THE WRITTEN CONSENT OF STAINLESS MOTORS, INC.

© COPYRIGHT STAINLESS MOTORS, INC. ALL RIGHTS RESERVED. YEAR OF COPYRIGHT IS FIRST YEAR INDICATED ON THE DRAWING.

DO NOT SCALE DRAWING

UNLESS OTHERWISE SPECIFIED

DIMENSIONS ARE IN INCHES
DIMENSIONS AND SURFACE
TEXTURE DESIGNATIONS
APPLY PRIOR TO FINISH

DEBURR AND BREAK ALL
SHARP EDGES 0.005 - 0.015

MATERIAL: T304 EXTERIOR
17-4 H1150 SHAFT

FINISH:
#4 LINE

GENERAL TOLERANCES:

.X = +/- 0.015
.XX = +/- 0.010
.XXX = +/- 0.005

FRACTIONAL = +/- 1/64
ANGULAR = +/- 1/2°

**STAINLESS
MOTORS INC.**

DRAWN: BDJ

CHECK:

ENG: JO

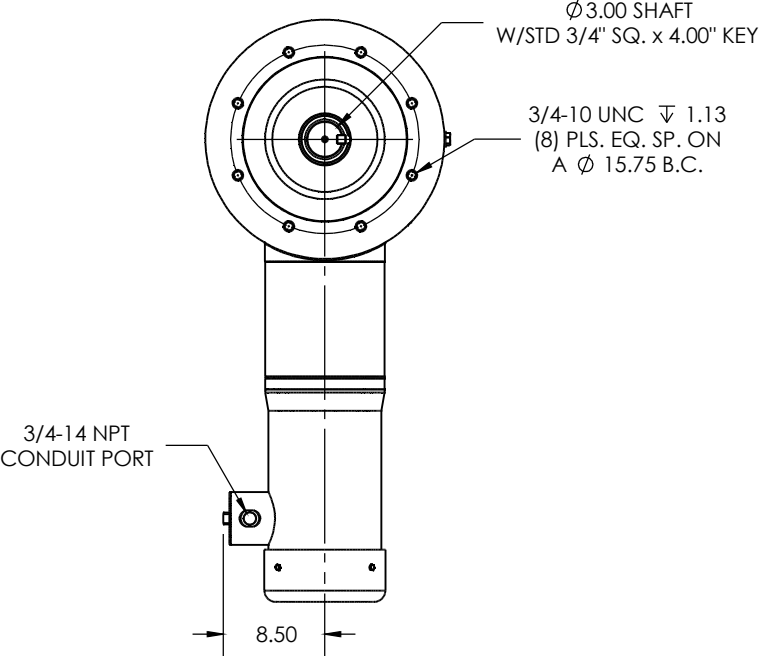
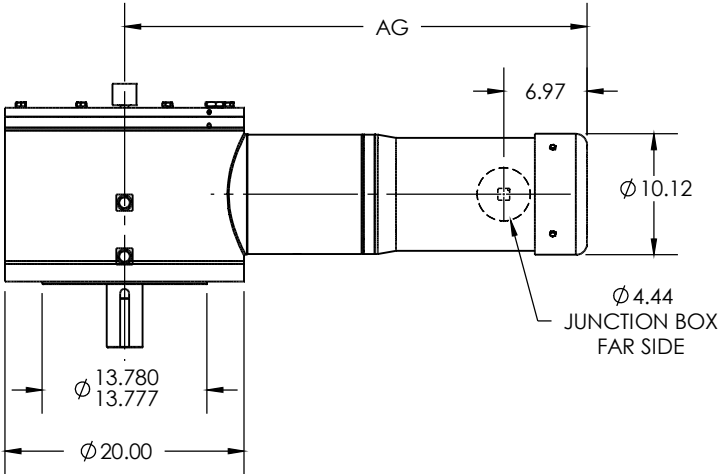
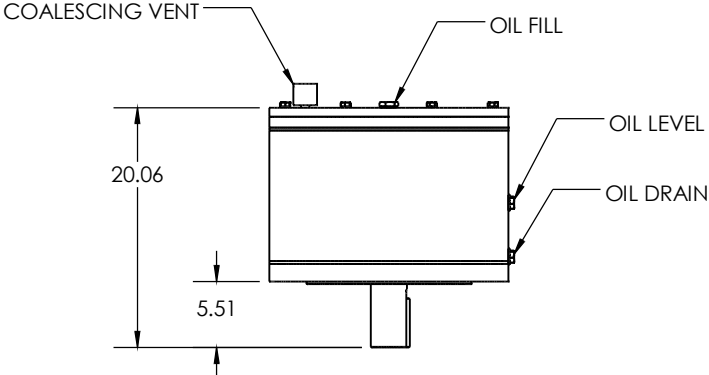
DATE: 6/1/2015

SBT2000
HOLLOW SHAFT
FLANGE MOUNT

NOTES:

REFERENCE
DRAWING:
NUMBER: F:\Website\GEARBOXES\SBT\SBT2000HXXXFXXX

REVISIONS			
REV.	DESCRIPTION	BY	DATE



AG DIMENSION								
OUTPUT RPM RANGE	5 HP	7.5 HP	10 HP	15 HP	20 HP	25 HP	30 HP	40 HP
71-200	---	---	---	---	---	---	---	44.14
51-70	---	---	---	---	---	---	---	47.46
36-50	---	---	---	---	---	44.71	45.71	---
27-35	---	---	---	---	43.76	---	---	---
17-26	---	---	---	42.26	---	---	---	---
12-16	---	38.56	38.68	---	---	---	---	---
10-11	---			---	---	---	---	---
9-10	35.96	---	---	---	---	---	---	---

DO NOT SCALE DRAWING		MATERIAL: T304 EXTERIOR 17-4 H1150 SHAFT		STAINLESS MOTORS INC.	
UNLESS OTHERWISE SPECIFIED		FINISH: #4 LINE			
DIMENSIONS ARE IN INCHES		GENERAL TOLERANCES: X = +/- 0.015 XX = +/- 0.010 XXX = +/- 0.005		DRAWN: BDJ	SBT2000 SOLID SHAFT C-FACE MOUNT
DIMENSIONS AND SURFACE TEXTURE DESIGNATIONS APPLY PRIOR TO FINISH				CHECK:	
DEBURR AND BREAK ALL SHARP EDGES 0.005 - 0.015		FRACTIONAL = +/- 1/64 ANGULAR = +/- 1/2°		ENG: JO	
REFERENCE DRAWING: NUMBER: F:\Website\IMOTOR DRAWINGS\GEARMOTORS\SBT\SBT2000SXXX.CXX				DATE: 6/1/2015	

- NOTES:
- OTHER SHAFT SIZES AVAILABLE
 - OTHER RATIOS AVAILABLE UPON REQUEST

THIS DRAWING CONTAINS INFORMATION WHICH IS PROPRIETARY AND CONFIDENTIAL TO STAINLESS MOTORS, INC., AND IS TRANSMITTED IN CONFIDENCE IN THE REPRODUCTION, USE OR DISCLOSURE, IN WHOLE OR IN PART, OF THE DESIGN CONTAINED HEREIN TO OTHERS IS PROHIBITED WITHOUT THE WRITTEN CONSENT OF STAINLESS MOTORS, INC.

© COPYRIGHT STAINLESS MOTORS, INC. ALL RIGHTS RESERVED. YEAR OF COPYRIGHT IS FIRST YEAR INDICATED ON THE DRAWING.