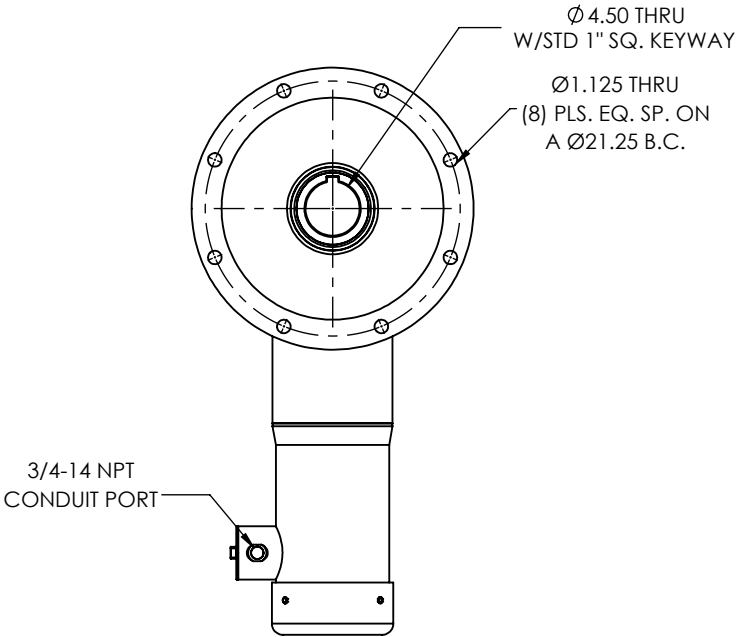
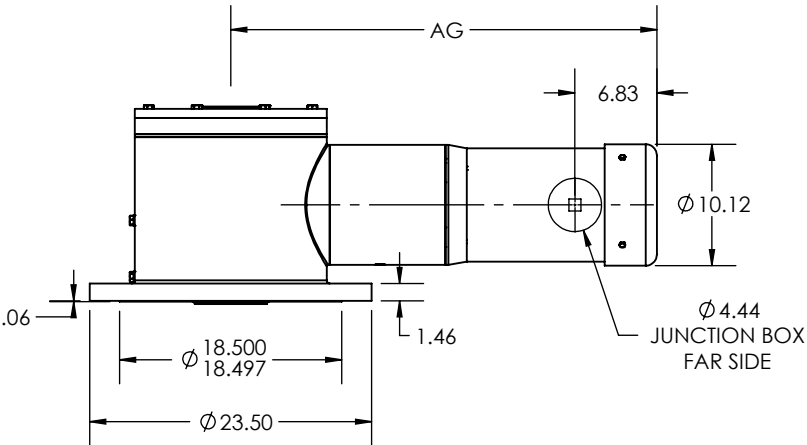
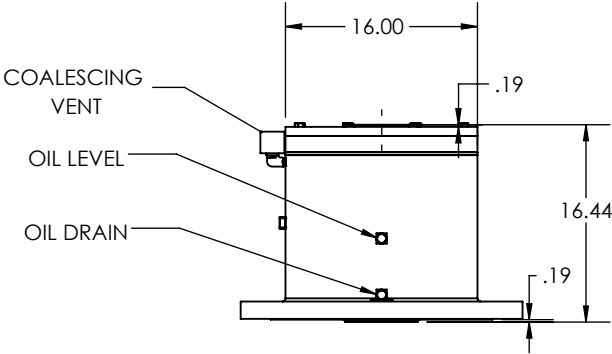


REVISIONS			
REV.	DESCRIPTION	BY	DATE



AG DIMENSION							
OUTPUT RPM RANGE	5 HP	7.5 HP	10 HP	15 HP	20 HP	25 HP	30 HP
71-200	---	---	---	---	---	41.71	42.71
51-70	---	---	---	---	44.08	---	---
36-50	---	---	---	42.58	---	---	---
27-35	---	---	39.00	---	---	---	---
17-26	---	38.88	---	---	---	---	---
12-16	36.28	---	---	---	---	---	---

THIS DRAWING CONTAINS INFORMATION WHICH IS PROPRIETARY AND CONFIDENTIAL TO STAINLESS MOTORS, INC., AND IS TRANSMITTED IN CONFIDENCE. THE REPRODUCTION, USE OR DISCLOSURE, IN WHOLE OR IN PART, OF THE DESIGN CONTAINED HEREIN TO OTHERS IS PROHIBITED WITHOUT THE WRITTEN CONSENT OF STAINLESS MOTORS, INC.

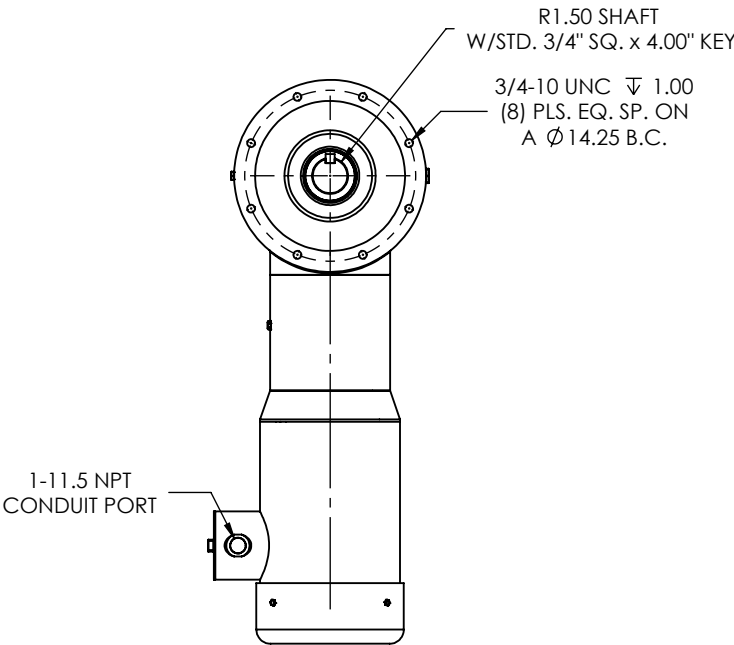
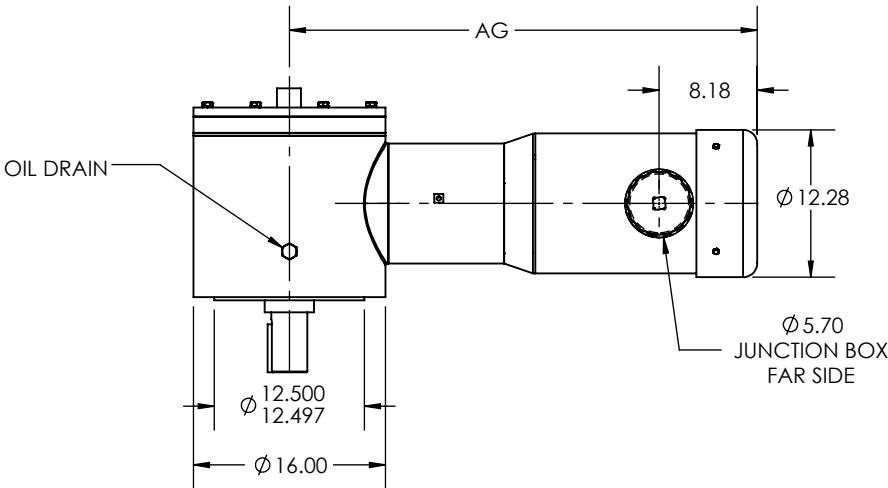
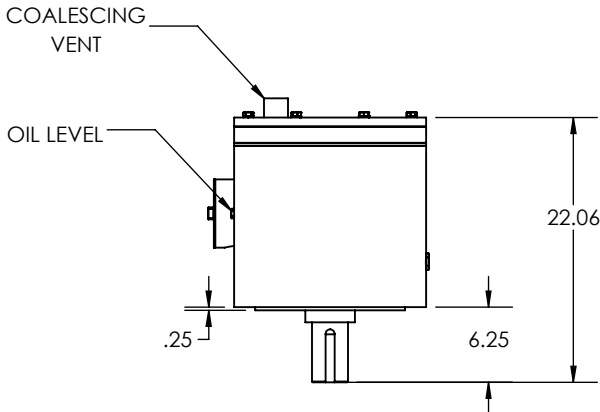
© COPYRIGHT STAINLESS MOTORS, INC. ALL RIGHTS RESERVED. YEAR OF COPYRIGHT IS FIRST YEAR INDICATED ON THE DRAWING.

DO NOT SCALE DRAWING	MATERIAL: T304 EXTERIOR 17-4 H1150 SHAFT
UNLESS OTHERWISE SPECIFIED	FINISH: #4 LINE
DIMENSIONS ARE IN INCHES	GENERAL TOLERANCES:
DIMENSIONS AND SURFACE TEXTURE DESIGNATIONS APPLY PRIOR TO FINISH	.X = +/- 0.015
DEBURR AND BREAK ALL SHARP EDGES 0.005 - 0.015	.XX = +/- 0.010
	.XXX = +/- 0.005
	FRACTIONAL = +/- 1/64
	ANGULAR = +/- 1/2°

STAINLESS MOTORS INC.	
DRAWN: BDJ	SBT1600
CHECK:	HOLLOW SHAFT
ENG: JO	FLANGE MOUNT
DATE: 5/29/2015	

NOTES:

REVISIONS			
REV.	DESCRIPTION	BY	DATE



AG DIMENSION							
OUTPUT RPM RANGE	5 HP	7.5 HP	10 HP	15 HP	20 HP	25 HP	30 HP
71-200	---	---	---	---	---	41.71	42.71
51-70	---	---	---	---	44.08	---	---
36-50	---	---	---	42.58		---	---
27-35	---	---	39.00	---	---	---	---
17-26	---	38.88	---	---	---	---	---
12-16	36.28	---	---	---	---	---	---

DO NOT SCALE DRAWING

UNLESS OTHERWISE SPECIFIED

DIMENSIONS ARE IN INCHES

DIMENSIONS AND SURFACE TEXTURE DESIGNATIONS APPLY PRIOR TO FINISH

DEBURR AND BREAK ALL SHARP EDGES 0.005 - 0.015

MATERIAL: T304 EXTERIOR 17-4 H1150 SHAFT

FINISH: #4 LINE

GENERAL TOLERANCES:
.X = +/- 0.015
.XX = +/- 0.010
.XXX = +/- 0.005

FRACTIONAL = +/- 1/64
ANGULAR = +/- 1/2°

STAINLESS MOTORS INC.

DRAWN: BDJ

CHECK:

ENG: JO

DATE: 5/29/2015

SBT1600
SOLID SHAFT
C-FACE MOUNT

THIS DRAWING CONTAINS INFORMATION WHICH IS PROPRIETARY AND CONFIDENTIAL TO STAINLESS MOTORS, INC., AND IS TRANSMITTED IN CONFIDENCE. THE REPRODUCTION, USE OR DISCLOSURE, IN WHOLE OR IN PART, OF THE DESIGN CONTAINED HEREIN TO OTHERS IS PROHIBITED WITHOUT THE WRITTEN CONSENT OF STAINLESS MOTORS, INC.

© COPYRIGHT STAINLESS MOTORS, INC. ALL RIGHTS RESERVED. YEAR OF COPYRIGHT IS FIRST YEAR INDICATED ON THE DRAWING.

REFERENCE DRAWING:

DRAWING NUMBER:

NOTES: