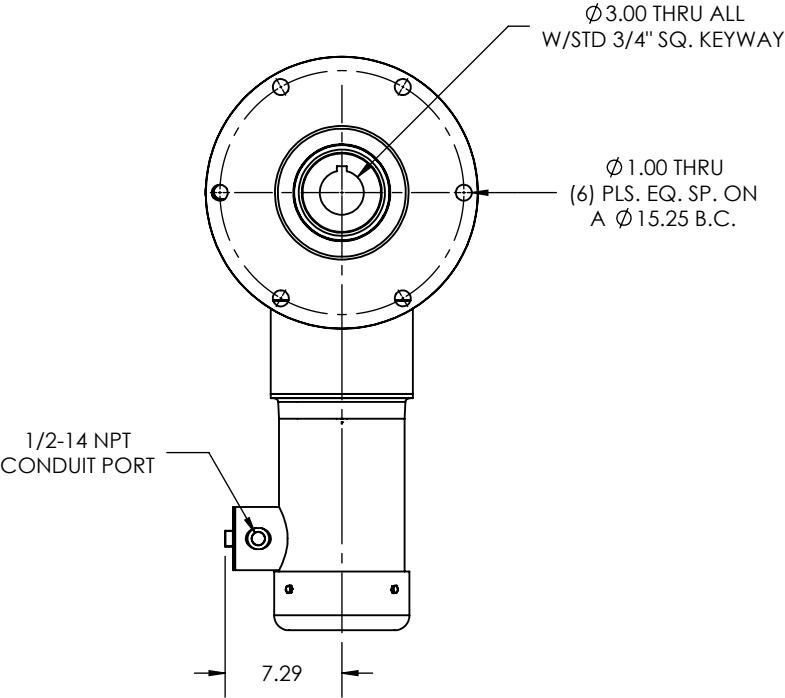
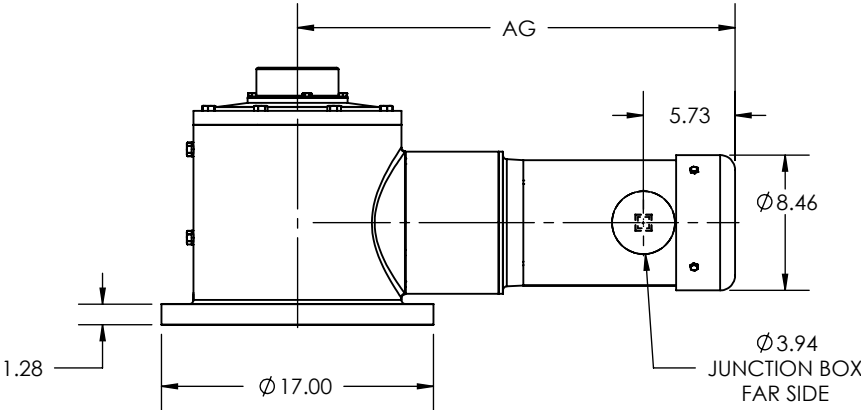
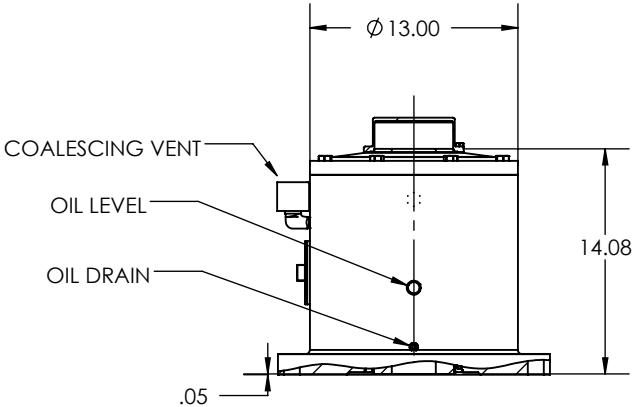


REVISIONS			
REV.	DESCRIPTION	BY	DATE



1. OTHER SHAFT SIZES AVAILABLE
2. OTHER RATIOS AVAILABLE UPON REQUEST

THIS DRAWING CONTAINS INFORMATION WHICH IS PROPRIETARY AND CONFIDENTIAL TO STAINLESS MOTORS, INC., AND IS TRANSMITTED IN CONFIDENCE. THE REPRODUCTION, USE OR DISCLOSURE, IN WHOLE OR IN PART, OF THE DESIGN CONTAINED HEREIN TO OTHERS IS PROHIBITED WITHOUT THE WRITTEN CONSENT OF STAINLESS MOTORS, INC.

© COPYRIGHT STAINLESS MOTORS, INC. ALL RIGHTS RESERVED. YEAR OF COPYRIGHT IS FIRST YEAR INDICATED ON THE DRAWING.

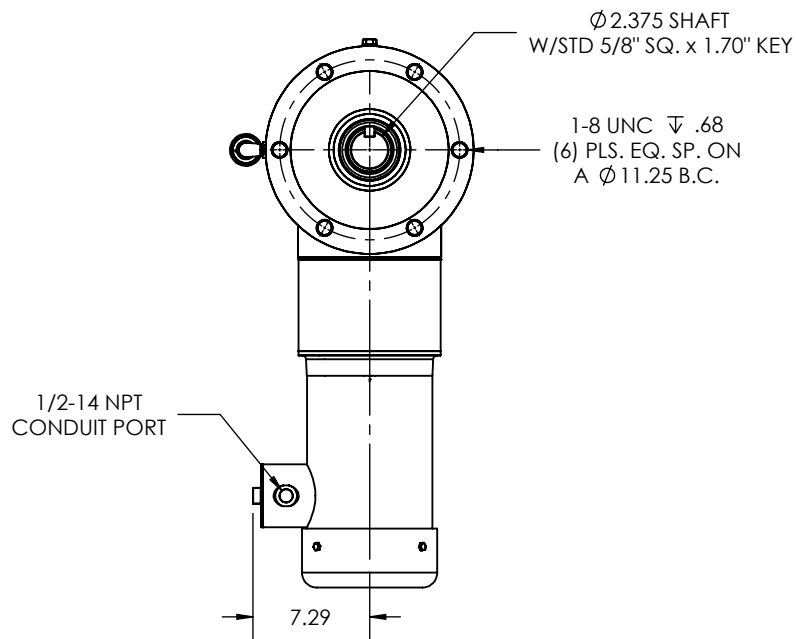
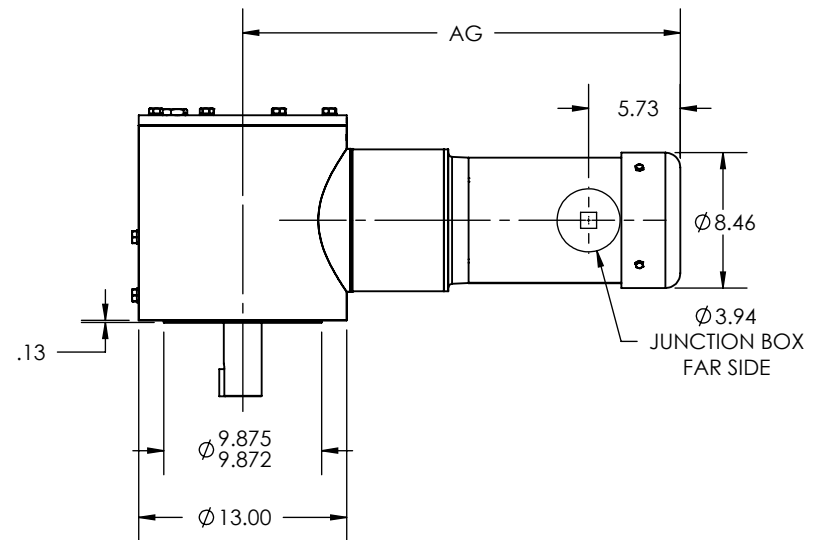
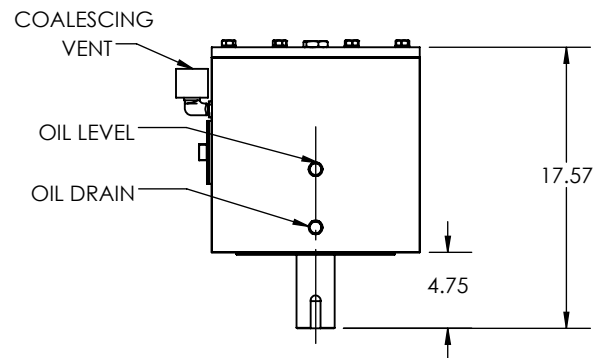
AG DIMENSION				
OUTPUT RPM RANGE	5 HP	7.5 HP	10 HP	15 HP
71-200	---	---	---	32.12
51-70	---	---	30.09	---
36-50	---	29.95	---	---
27-35	27.35	---	---	---

DO NOT SCALE DRAWING	MATERIAL: T304 EXTERIOR 17-4 H1150 SHAFT	STAINLESS MOTORS INC.	
UNLESS OTHERWISE SPECIFIED	FINISH: #4 LINE		
DIMENSIONS ARE IN INCHES	GENERAL TOLERANCES:	DRAWN: BDJ	SBT1300 HOLLOW SHAFT FLANGE MOUNT
DIMENSIONS AND SURFACE TEXTURE DESIGNATIONS APPLY PRIOR TO FINISH	.X = +/- 0.015 .XX = +/- 0.010 .XXX = +/- 0.005	CHECK:	
DEBURR AND BREAK ALL SHARP EDGES 0.005 - 0.015	FRACTIONAL = +/- 1/64 ANGULAR = +/- 1/2°	ENG: JO	
		DATE: 5/28/2015	

NOTES:

REFERENCE DRAWING: F:\Website\GEARBOXES\SBT\SBT1300HXXXFXXX

REVISIONS			
REV.	DESCRIPTION	BY	DATE



1. OTHER SHAFT SIZES AVAILABLE
2. OTHER RATIOS AVAILABLE UPON REQUEST

THIS DRAWING CONTAINS INFORMATION WHICH IS PROPRIETARY AND CONFIDENTIAL TO STAINLESS MOTORS, INC., AND IS TRANSMITTED IN CONFIDENCE. THE REPRODUCTION, USE OR DISCLOSURE, IN WHOLE OR IN PART, OF THE DESIGN CONTAINED HEREIN TO OTHERS IS PROHIBITED WITHOUT THE WRITTEN CONSENT OF STAINLESS MOTORS, INC.

© COPYRIGHT STAINLESS MOTORS, INC. ALL RIGHTS RESERVED. YEAR OF COPYRIGHT IS FIRST YEAR INDICATED ON THE DRAWING.

AG DIMENSION				
OUTPUT RPM RANGE	5 HP	7.5 HP	10 HP	15 HP
71-200	---	---	---	32.12
51-70	---	---	30.09	---
36-50	---	29.95	---	---
27-35	27.35	---	---	---

DO NOT SCALE DRAWING	MATERIAL: T304 EXTERIOR 17-4 H1150 SHAFT	STAINLESS MOTORS INC.	
UNLESS OTHERWISE SPECIFIED	FINISH: #4 LINE		
DIMENSIONS ARE IN INCHES	GENERAL TOLERANCES:	DRAWN: BDJ	SBT1300 SOLID SHAFT C-FACE MOUNT
DIMENSIONS AND SURFACE TEXTURE DESIGNATIONS APPLY PRIOR TO FINISH	.X = +/- 0.015 .XX = +/- 0.010 .XXX = +/- 0.005	CHECK:	
DEBURR AND BREAK ALL SHARP EDGES 0.005 - 0.015	FRACTIONAL = +/- 1/64 ANGULAR = +/- 1/2°	ENG: JO	
		DATE: 5/28/2015	

REFERENCE DRAWING: \\sbs2\mfgdata\Website\GEARBOXES\SBT\SBT1300SXXCXXX
--

NOTES: